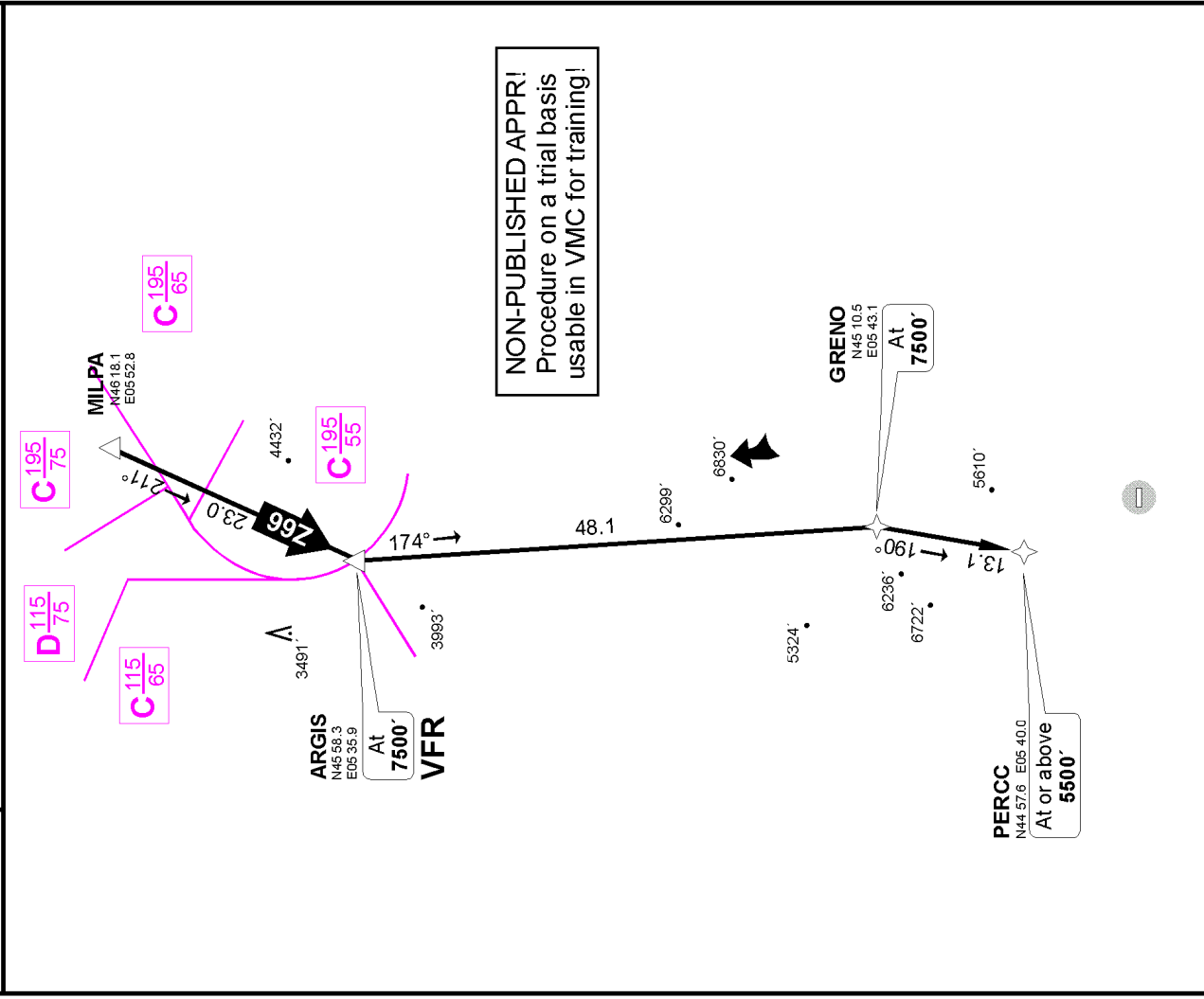


# MONTMEILLEUR, FRANCE VFR RNAV Arrival

© Rudolf Wnter, 2004

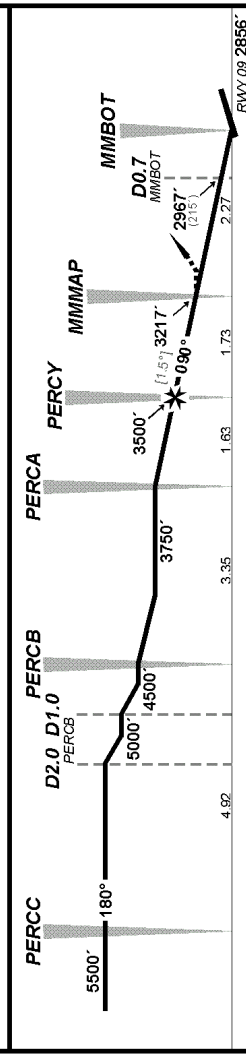
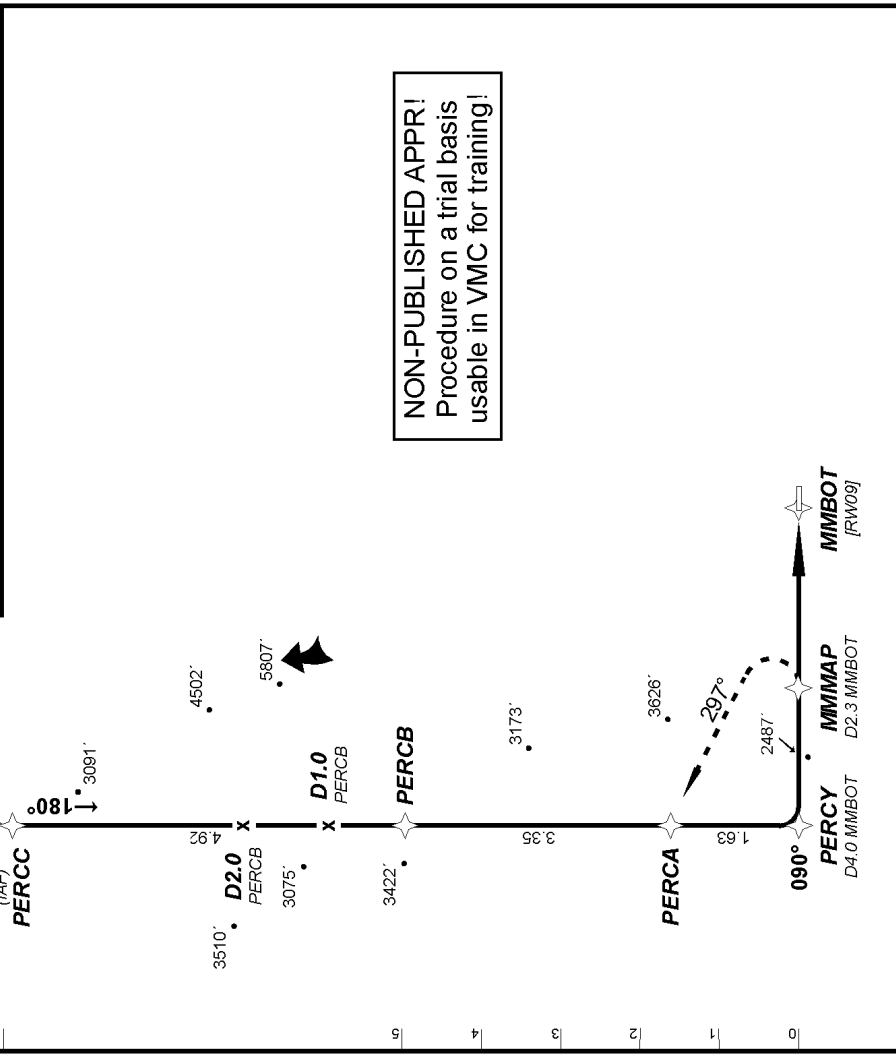
ATIS	MARSEILLE Info	MARSEILLE Control	MONTMEILLEUR
	<b>124.5</b>	<b>128.325</b>	<b>130.00</b>
Apt Elev 2911' TDZ <b>2856'</b> Rwy uphill 10 %	ROUTING: MILPA - Z66 - ARGIS/VFR - GRENO (7500') - PERCC (5500' + ; K120-)		



# MONTMEILLEUR, FRANCE GPS Rwy 09

© Rudolf Wnter, 2004

ATIS	MARSEILLE Info	MARSEILLE Control	MONTMEILLEUR
	<b>124.5</b>	<b>128.325</b>	<b>130.00</b>
Final Aptch Crs <b>090°</b>	MDA <b>3217'</b>	Apt Elev 2911' TDZ <b>2856'</b> Rwy uphill 10 %	MISSED APCH: Turn LEFT immediately to hdg 297° (30° bank, max. 120 KIAS) and CLIMB to 5500'. Proceed direct to PERCA. At PERCA turn RIGHT to hdg 000°.
	GRENO		GS KIAS
			80 85 90 95 100
			Desc rate (fpm)
			215 228 242 255 268
			PERCY to MMBOT
			3:00 2:49 2:40 2:32 2:24



RWY 09 2856'